



The Cardinal

1934

THE
CARDINAL

1934

VOLUME XI

Published by

THE SENIOR CLASS

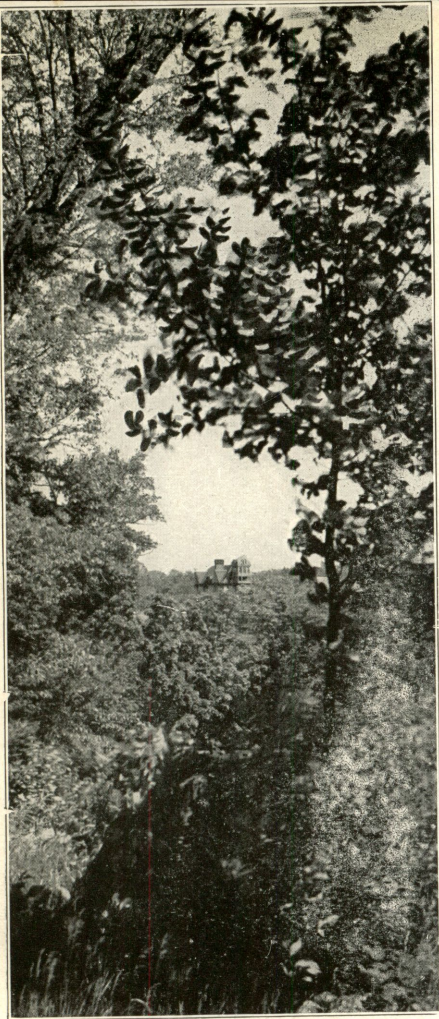
Emmanuel
Missionary
College

Berrien
Springs
Michigan

RESOLVED:

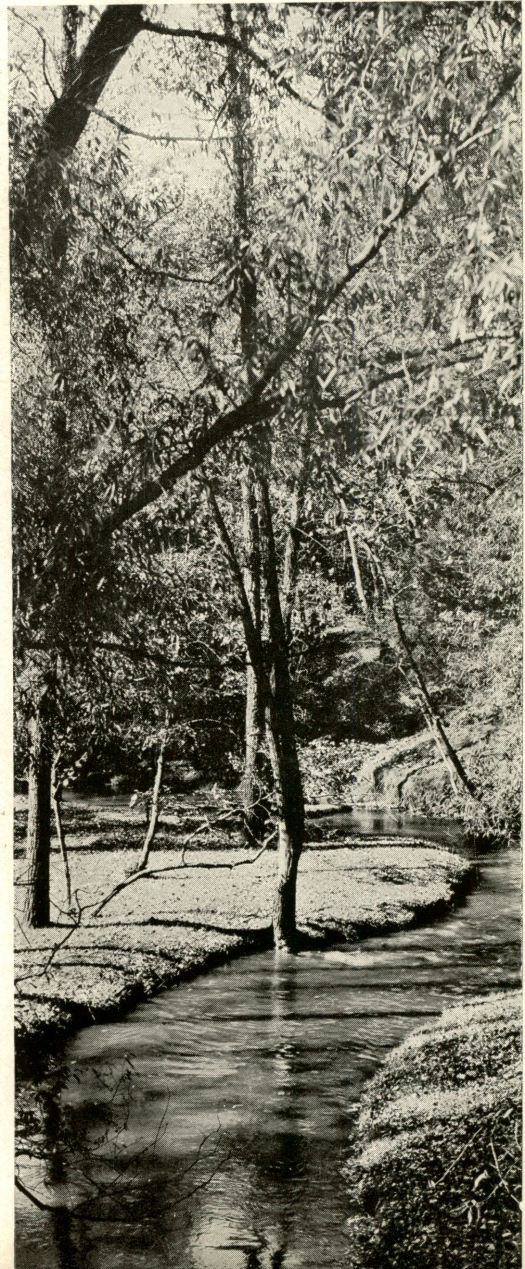
Mouths are not fed by sighing,
"Oh, how pitiful!" and sitting in th shade;
And no thirst slaked by folding of th hands.
No more ar souls. Th battling blade
Wins many a tilt, and every stand
Against our sins needs force.
All true! But there's a calm, all-trusting strength
That roots itself in prayer—source
Inexhaustible!—and is content
To sit, with her who chose the better part,
In listening silence at the Strength'ner's feet;
To drink deep where still waters start,
And f d on Bread of Life for meat.
We choose the same. From now
Each hour spent in fray or mart
Shall have its double on our knees, and though
This new adventure bring in retinue
Loss, slander, poverty, pain, burden, blame,
We'll pray it through!

I. Ragnhild Berner



*About a mile distant
from E. M. C.
as the cardinal flies*

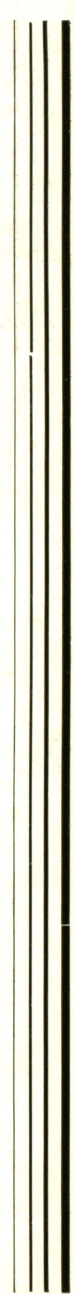
*The lace of leaves
on Lemon Creek*





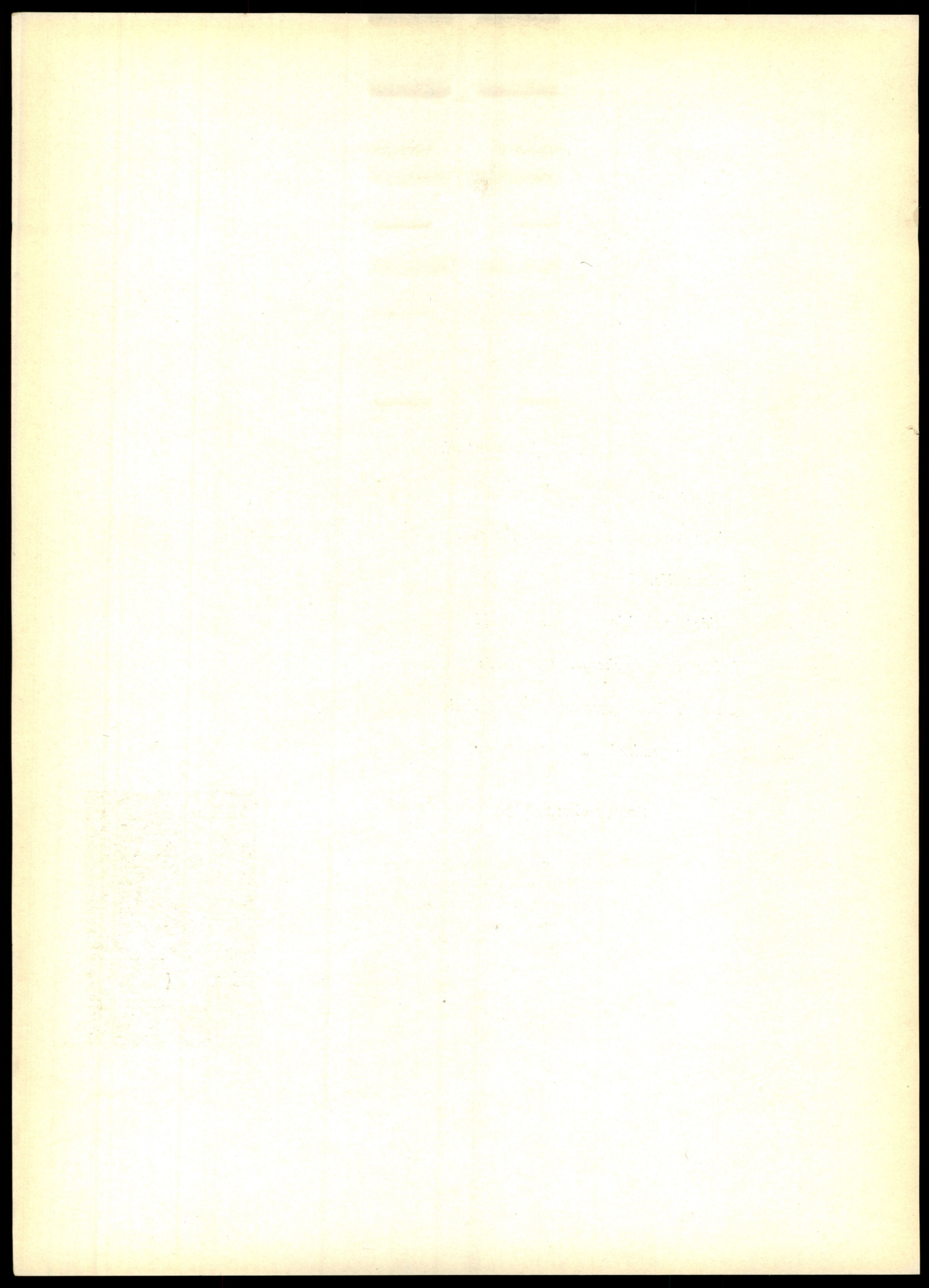
Dedication

From two whose hearts are as warm and glowing as the brilliant plumage of the cardinal, whose steadfast courage and bright faith are as cheering as its friendly song, we have received inspiration. More poignant than a sigh for the autumn flight of birds is the thought of parting with such friends. We, the Senior Class of nineteen thirty-four, who have spent the past four years with President and Mrs. Lynn H. Wood, add richness to the song of our Cardinal by dedicating it to them.



They **C**an never be forgotten, who
compose the **ADMINISTRATION**
of our college. **R**ight from the start
of college life, they **D**irect the minds,
guide the decisions, **I**nspire the ideals,
of those in their charge. **N**o words
can more than suggest our **A**ppreciation,
our esteem, our gratitude, and our **L**ove.

Senior Class of '34



Board of Trustees

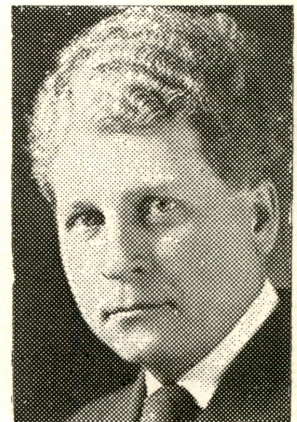
W. H. HOLDEN, *President*, Berrien Springs, Michigan
L. H. WOOD, *Secretary*, Berrien Springs, Michigan
K. F. AMBS, Berrien Springs, Michigan
EARL BEATY, Berrien Springs, Michigan
H. E. EDWARDS, Berrien Springs, Michigan
L. W. FOOTE, Berrien Springs, Michigan
C. B. HAYNES, Lansing, Michigan
R. E. HOEN, Berrien Springs, Michigan
M. A. HOLLISTER, Brookfield, Illinois
F. R. ISAAC, Berrien Springs, Michigan
T. R. LUKENS, La Grange, Illinois
J. W. OSBORN, Berrien Springs, Michigan
V. E. PEUGH, Madison, Wisconsin
J. D. SNIDER, South Bend, Indiana
T. W. STEEN, La Grange, Illinois
S. E. WIGHT, Indianapolis, Indiana

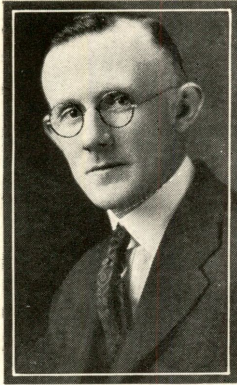
Officers of the Administration

LYNN H. WOOD, *President*
KARL F. AMBS, *Business Manager*
HARRY E. EDWARDS, *Director of Summer Session*
BURTON H. PHIPPS, *Principal of Secondary School*
CHARLES A. BURMAN, *Dean of Men*
MARY E. LAMSON, *Dean of Women*
WANDA WESTCOTT-MACMORLAND, *Registrar*
ANNA L. BLACKNEY, *Librarian*

In Memoriam R. E. Harter

A friend of E. M. C. whose life, as well as his stirring addresses to senior classes of other years, has been an inspiration.





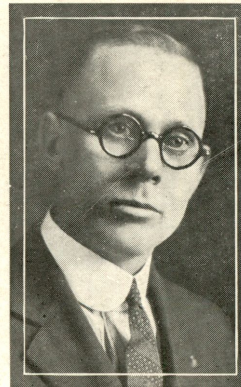
Burton H. Phipps
Instructor in Education;
Principal Secondary
School

Glee H. King
Instructor in Applied
Arts



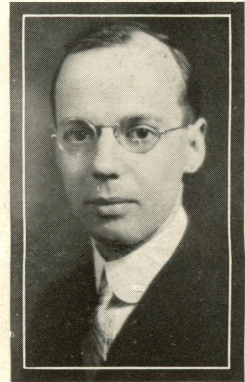
Robert MacMorland
Instructor in Education;
Critic Teacher in Social
Science

Mildred Granbois
Instructor in Foreign
Language; Instructor in
Education; Critic Teach-
er in French



Leora Summey-
Burman
Instructor in Education;
Critic Teacher in Eng-
lish

Lewis N. Holm
Instructor in Applied
Arts



Harold B. Hannum
Instructor in Fine Arts

John B. Krauss
Lecturer in Applied Arts

Ella King-Sanders
Instructor in Education

Anna L. Blacknev
Instructor in Applied
Arts

Olive Lindberg
Instructor in Education;
Critic Teacher in Ele-
mentary School



Maria Hornbacher
Matron

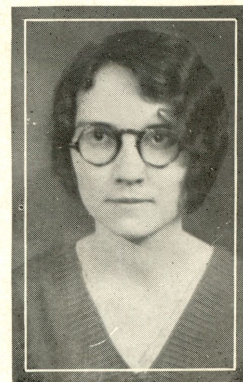
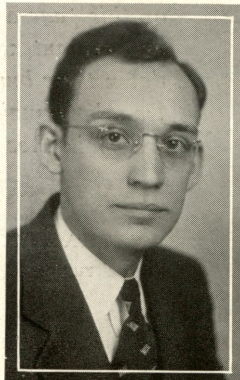


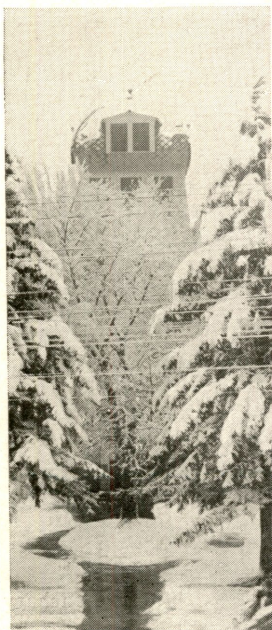
Edith Jones
Instructor in Education;
Critic Teacher in Ele-
mentary School

Willard F. Shadel
Instructor in Fine Arts



Malvina Zachary-
Taylor
Assistant Instructor in
Fine Arts





In Memoriam

As this issue of our Cardinal goes to press we pause, and with heartfelt sympathy with those who mourn, we set on this page a memorial to those of our number in days past and present, who have trod our halls, but who have now laid down their burdens, only to awaken when He calls. Shall not we who remain so conduct our ways that when He bids, we may join those whom we have honored on this page.

MARTHA IVEY HAIR

February 18, 1914—September 24, 1933

SARAH ELLEN STICKLE

January 19, 1896—March 12, 1934

LYNDON L. SKINNER

February 4, 1902—May 8, 1934

EUGENE ALVEN FISHER

December 19, 1912—May 12, 1934

In the **CLASSES** of E. M. C.

may be found **A**ll the elements of group

loyalty. **R**adiant spirit of

cooperation causes **D**ifferences of age,

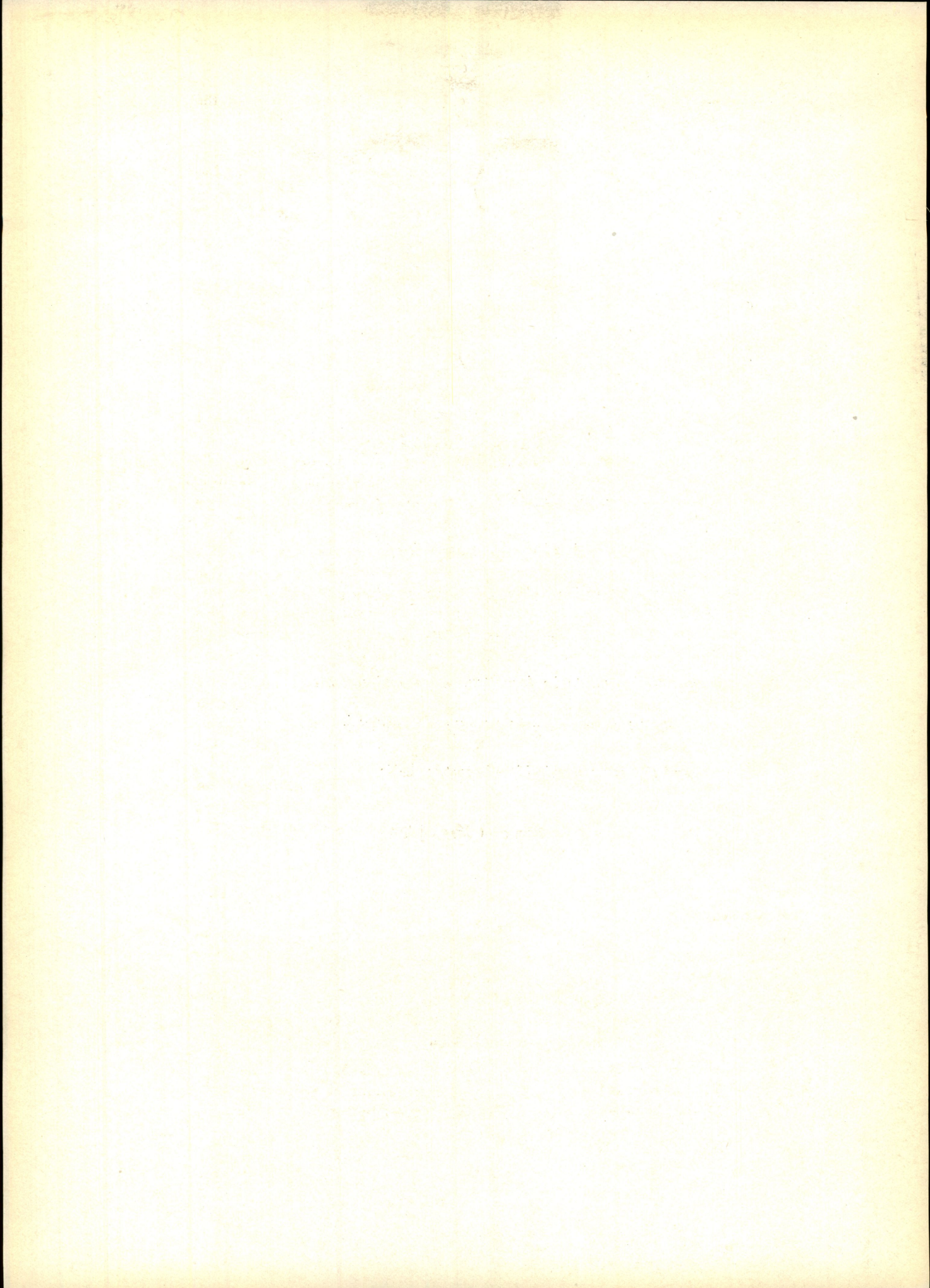
experience. **I**ntellectual

attainment to be forgotten. **N**ow and ever we

cherish the memory of friendly **A**ssociation,

and the gay comradeship of campus **L**ife.

Senior Class of '34



President's Address

Members of the Board of Trustees, President Wood and Members of the Faculty, Schoolmates and Classmates, Mothers and Fathers, and Friends:

As we, the Class of 1934, appear before you this evening, our spirits flow in rich currents of feeling, and our imaginations paint inviting pictures of success for the future; a fanfare of sentiments sounds in our minds at this moment when we are flushed with the satisfaction of achievement.

We should feel very derelict in our duty if we did not at the outset convey to you, our parents, teachers, and friends, an expression of our deep gratitude, and acknowledge to you our indebtedness for the inspiration, assistance, and guidance you have extended to us in making this joyous occasion possible. Our pride is paradoxically humble as we look back upon the past four years with a measure of satisfaction. And as we peer into the future we are seized with eagerness to enter into the duties that loom up on our horizon according to God's plan. . .

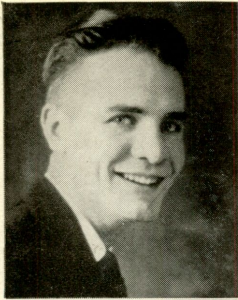
We esteem ourselves as very fortunate in being numbered among the comparatively few who are privileged to attend a college with such majestic ideals and noble aspirations. . . Scattered all over the world are men and women who have gone out from this institution with their hearts warmed with such fervency of spirit and with such ardent devotion for others that years of penury, sacrifice, and toil have failed to chill their consecration to God or to dampen their devotion to duty. . .

As we have sat at the feet of our Alma Mater, our vision has been broadened and enlarged. We have been permitted to peer into our own inclinations and have been made to realize that we must exercise strict lordship over our reason and conscience, shunning the fatal voices that beckon us to fatal grounds. We have been given a true perspective of life as it exists in reality and a discernment of genuine values when weighed in the scales of eternity. . .

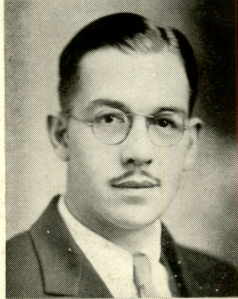
Tonight we look out upon a world in a grave state of perplexity. Nations are on the verge of national bankruptcy. National debts are so colossal that they stagger the imagination. . . The European situation is a mass of political entanglements and secret intrigues for the extension of boundaries and the advancement of selfish interests. The war clouds in the Far East are hanging low on the horizon, while China, Japan, and Russia are setting the stage for a titanic grapple. This political menace to civilization combined with burdensome taxation, wide-spread unemployment, and general discontent among the masses of the world has become so intricate that conservative statesmen are bewildered.

What is the solution to this baffling situation? Ask France, and she would say the annihilation of Germany and the cancellation of debts to the United States. Germany would say the complete and unqualified adoption of Hitler's policy. Italy would declare the acceptance of a five-power parley plan. Russia would say Communism. The head of the Papal States would say universal adoption of Roman Catholicism. . . Capitalists and war-lords would say another world war. Jesus Christ says that the solution is in His second coming and the establishment of an everlasting kingdom of righteousness where there will be permanent peace and universal prosperity based upon the foundation of unchanging love.

So, believing this last view to be the only sure and wise one, we have *chosen the better part* and turned from natural inclinations, consecrating ourselves to preparing the world for the ushering in of this ideal reign of righteousness in keeping with the ideals of our Alma Mater.



Harry W. Taylor
President



Raymond Shelden
Vice-President



Elsie Winders
Secretary



Robert Hervig
Treasurer



Edward C. Banks
Pastor

AIM

*To Choose the
Better Part*

MOTTO

Praying Through

COLORS

Cardinal and Ivory

FLOWER

Peony

Dr. H. E. Edwards
Class Advisor

Class Night Program

- Processional* *Opal Miller*
- Invocation* *Edward Banks*
- President's Address* *Harry W. Taylor*
- English Horn Solo* *Lewis George*
- Oration on Motto* *Clarence C. Katt*
- Double Octet*
- Oration* *William T. Hodgson*
- Violin Solo* *Malvina Zachary-Taylor*
- Presentation of Class Gift* *H. Raymond Shelden*
- Farewell Address* *Irene Wakeham*
- Benediction* *John Lipps*

Candidates for the Bachelor of Arts Degree

Irma Ragnhild Berner, B. A.—Illinois
 Major—Mod. Lang.; Minors—Eng., Education
 Austin High School, Chicago, Ill., '29
 Sec. Sabbath School, '33
 Treas. Le Cercle Francais, '34
*"Ah, but a man's reach should exceed his grasp,
 Or what's a heaven for?"*

Alice Wilma Bodine, B. A.—Wisconsin
 Major—Education; Minors—History, English
 Broadview Junior College
 Leader M. V. Society, '33
 Leader Prayer Band, '33-'34
"Kind acts are beautiful."

Ada Eleanor Dean, B. A.—New York
 Major—Education; Minors—English, History
 Northfield Seminary, Mass., '29
 Glee Club, '34
 Cultural Arts Guild, '34
*"Her heart and hand both open and free;
 For what she is, she shows,
 And what she has, she gives."*

Elton Dessain, B. A.—Illinois
 Major—History; Minors—Education, English
 Glendale Union Academy, Calif., '29
 Asst. Leader M. V. Society, '33
 Assoc. Editor Student Movement, '33
"There is honesty, manhood, and good fellowship in thee."

Herald Habenicht, B. A.—Argentine
 Major—Business; Minor—Spanish
 Cedar Lake Academy, '27
 Asst. Supt. Sabbath School, '31
 Student Board of Management, '31
"To him obstacles are only stepping stones to success."

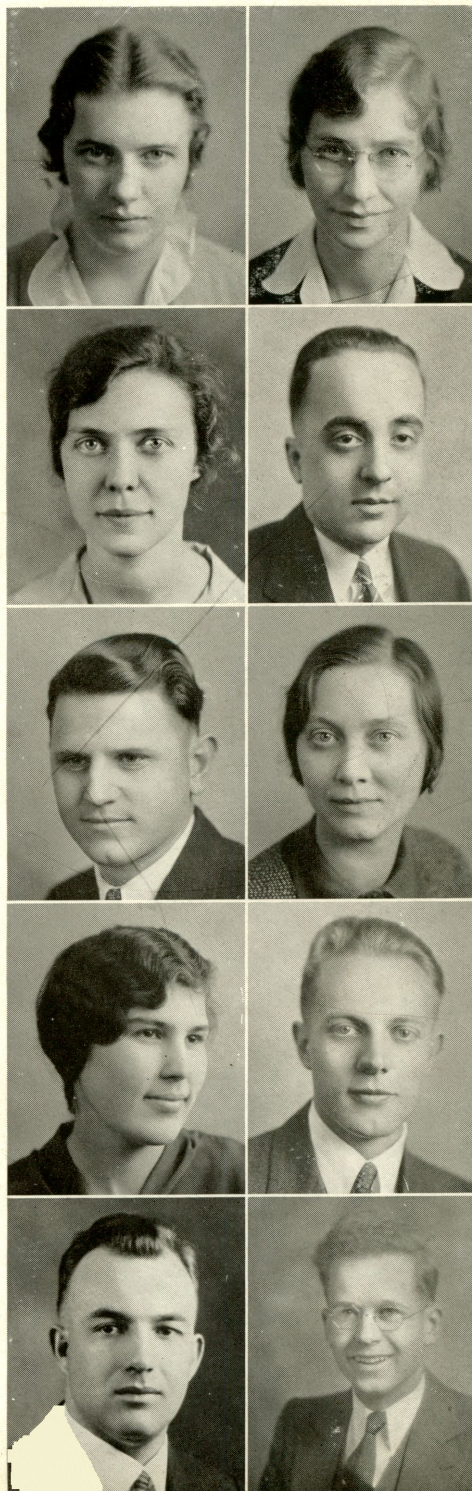
Kathryn Kilpatrick-Habenicht, B. A.—Ind.
 Major—Education; Minors—English, History
 Bloomington High School, '24
 E. M. C. Normal Dept., '29
 Leader Jr. Sabbath School, '31
"True to her word, her work, her friends, and her God."

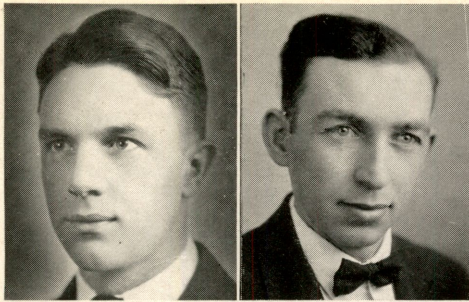
Helen Buck-Hervig, B. A.—Michigan
 Major—English; Minors—Math., Education
 Allegan High School, '27
 Orchestra, '33-'34
*"She will be sincere and true, and God will have
 His way in her."*

Robert Howard Hervig, B. A.—Michigan
 Major—Business; Minors—Education, Math.
 Allegan High School, '26
 Treas. Student Association, '34
 Treas. Senior Class, '34
"A man of cheerful yesterdays and confident tomorrows."

William T. Hodgson, B. A.—South Africa
 Major—Education; Minors—English, History
 Helderberg College, S. Africa, '29
 Field and M. V. Sec. Cape Conference, '29-'31
 President Junior Class, '33
"Whatever he undertakes to do, he does it well."

John Gilbert Holmes, B. A.—Illinois
 Major—History; Minors—Business, Education
 Chicago Academy, '28
 Asst. Supt. Sabbath School, '34
 College Band, '34
*"His actions speak content,
 His ways are ways of peace."*





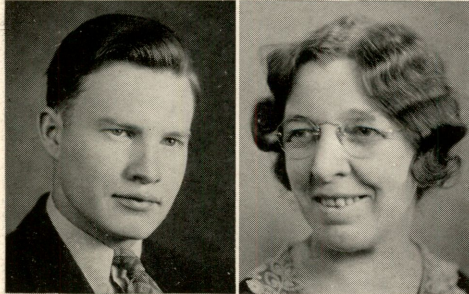
Clarence C. Katt, B. A.—Illinois
 Major—Business; Minors—Educa., Eng., Hist.
 Lindblom High School, Chicago, Ill., '29
 President Student Association, '34
 Asst. Leader M. V. Society, '33
"The most manifest sign of wisdom is continual cheerfulness."

*Philip Kiesz, B. A.—South Dakota
 Major—Education; Minors—Hist., Mod. Lang.
 Broadview College, '29-'33
 Sabbath School Superintendent and Chorister
 President Seminar, Broadview
"An outward and visible sign of an inward and spiritual grace."



Grace Lyllyan Maas, B. A.—Wisconsin
 Major—English; Minors—Education, History
 Bethel Academy
 E. M. C. Normal Diploma, '25
 Teacher Elementary Work, '25-'32
*"With gentle, yet prevailing force,
 Intent upon her destined course,
 Graceful and useful all she does;
 Blessing and blessed where'er she goes."*

Opal Lucille Miller, B. A.—Louisiana
 Major—English; Minor—Music
 Byrd High School, Shreveport, La., '30
 Southern Junior College, '32
 Assoc. Editor Cardinal, '34
*"She doth strive in thought and word and feeling,
 So to live as to make earth next to heaven."*



Oliver Pitts, B. A.—Wisconsin
 Major—Business; Minor—English
 Indiana Academy, '25
 Asst. Leader M. V. Society, '34
 Student Board of Management, '34
"What he wills to do, he does with a will."

Alfaretta Matilda Sherman, B. A.—Mich.
 Major—English; Minor—History
 E. M. C. Academy
 Leader 4-H Club, '30-'32
 Teacher Public School, '29-'32
*"Tongues in trees, books in the running brooks,
 Sermons in stones, and good in everything."*



Rebekah Jane Steen, B. A.—Illinois
 Major—Mod. Languages; Minors—Eng., Edu.
 Broadview Academy, '30
 Sec. Sabbath School, '34
 A Cappella Choir, Broadview, '31-'32
"Her cheering smile sends sunlight into every soul."

Harry Werbayne Taylor, B. A.—Michigan
 Major—English; Minors—French, Hist., Edu.
 E. M. C. Academy, '30
 President Senior Class, '34
 Vice-President Junior Class, '33
*"Firm in duty, cheerful in life,
 He standeth aloof from the realms of strife."*



Malvina Zachary-Taylor, B. A.—Michigan
 Major—English; Minor—Music
 Southern Junior College, '30
 Teacher Violin, E. M. C., '30-'34
 Director String Trios and Quartets, '30-'34
*"A cheerful companion, a housekeeper neat;
 Modest, kind, and always sweet."*

Mabel Irene Wakeham, B. A.—Michigan
 Major—English; Minors—French, Education
 E. M. C. Academy, '29
 E. M. C. Secretarial Course, '31
 Editor-in-Chief Cardinal, '34
*"Rich in saving common sense, and as the greatest
 only are,
 In her simplicity sublime."*

*Summer Senior

Ruth Gertrude West, B. A.—Michigan
 Major—Business; Minor—English
 Bethel Academy, '28
 Business Office, '28-'34
 Pianist Sabbath School, '29-'30
"True worth is in being, not seeming."

Elsie B. Winders, B. A.—Kentucky
 Major—Business; Minors—English, Education
 Indiana Academy, '28
 Cashier Business Office, '28-'34
 Sec. Senior Class, '34
*"With her ability, confidence and perseverance,
 All things are attainable."*

**Candidates for the Bachelor of
 Theology Degree**

Edward C. Banks, B. Th.—Georgia
 Pisgah Industrial Institute, '28
 Southern Junior College, '31
 Asst. Leader M. V. Society, '31
*"My heart was made for Thee, O God,
 And it shall not rest until it rests in Thee."*

Lionel Osmond Irons, B. Th.—Jamaica
 Oakwood Junior College, '29
 Pres. Senior Class, Oakwood, '29
 Accountant, Oakwood, '29-'32
*"He says that he is striving to be, if possible, a
 second Booker T."*

John Peter Lipps, B. Th.—Holland
 Monitor Maple Hall, '33-'34
 President Ministerial Seminar, '34
 Asst. Leader M. V. Society, '33
*"They are never alone who are accompanied by noble
 thoughts."*

**Candidates for the Bachelor of
 Science Degree**

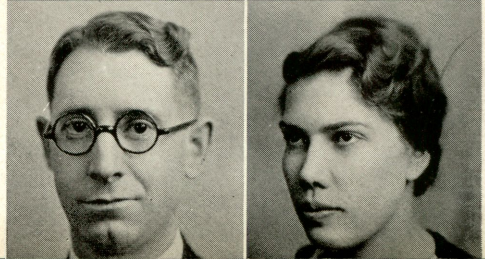
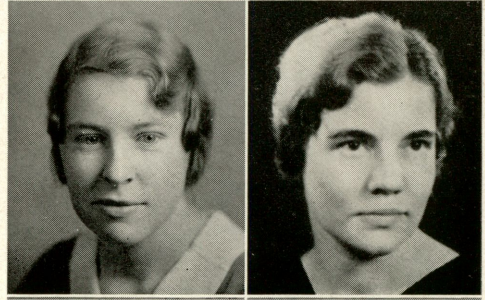
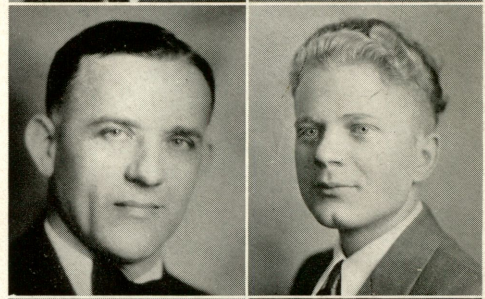
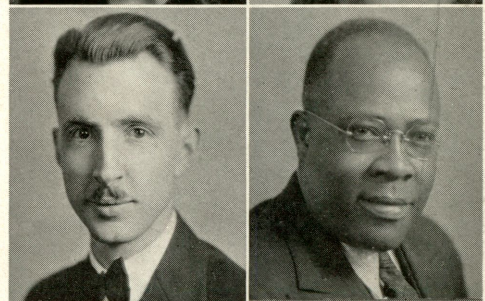
Herbert Berg, B. S.—Wisconsin
 Major—Science; Minor—Mathematics
 Battleford Academy, Saskatchewan, '26
 Vice-President Ministerial Seminar, '33
"This above all, to thine own self be true."

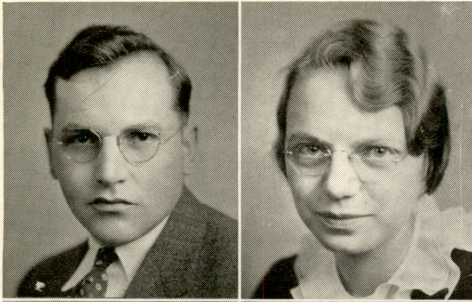
Mildred Ferguson, B. S.—Illinois
 Major—Home Ec.; Minors—Edu., Sci., French
 Fox River Academy, '29
 Vice-President Home Economics Club, '34
*"I know nothing but the true, the good, and the
 gentle."*

Mary Gartly, B. S.—Tennessee
 Major—Home Ec., Minors—Science, Education
 Central High School, Memphis, Tenn., '27
 Monitor Birch Hall, '34
 Sec. Forum, '31
"To all obliging, yet to all reserved."

Glenn A. Houck, B. S.—Iowa
 Major—Education; Minors—Agricul., Science
 Enterprise Academy, Kansas, '23
 Supervisor Farm Departments, '28-'34
*"A man who governs his own cause with a steady
 hand,
 Who does himself with sovereign power command."*

Alfaretta Johnson, B. S.—Wisconsin
 Major—Home Ec., Minors—Science, Education
 Antigo High School, Wisconsin, '30
 Sec. Sabbath School, '31
 Sec. Pre-Medical Society, '33
*"Mind alert, intent; eyes that look deep into the
 heart of things."*





Clarence Carl Krohn, B. S.—Wisconsin
 Major—Agriculture; Minors—Science, Educa.
 Bethel Academy, '24
 Supervisor Farm Departments, '29-'33
 Advertising Mgr. Cardinal, '34
*"Quiet and unassuming, he goes through life,
 A friend to all who come his way."*

Lillian M. Larson, B. S.—Wisconsin
 Major—Science; Minors—Educa., Mathematics
 Wisconsin High School, '31
 Vice-President Scientia, '33
 Sec. Sabbath School, '32
*"She is excellent who can suit her temper to any
 circumstance."*

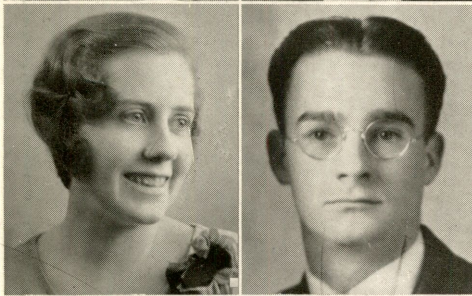


Lorna Elaine Lindsay, B. S.—Wisconsin
 Major—Home Ec., Minors—Science, Education
 Wisconsin High School, '24
 Sec. Student Association, '33
 President Forum, '34
*"She hath a natural, wise sincerity, a simple truth-
 fulness;
 And these have lent her steadfast courage."*

H. Raymond Shelden, B. S.—Ohio
 Major—Science; Minors—Mathematics, Educa.
 Chester High School, '28
 Southern Junior College, '31
 Vice-President Student Association, '33
*"Faithful at study, faithful at work,
 Seldom ever wants to shirk."*

Candidates for Professional Diplomas

Bible Workers' Dip'oma

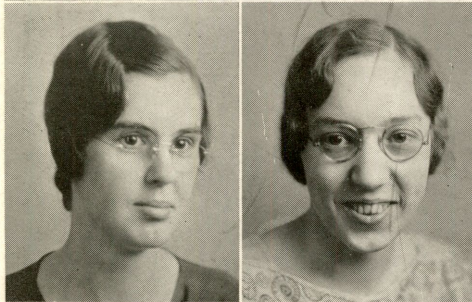


Elizabeth Sherman—Illinois
 Fox River Academy, '31
 Ochestra, '31-'33
 Sec. Sabbath School, '32
"Her cheering smile sends sunlight into every soul."

Business Administration Diploma

Arthur L. Tucker—Illinois
 Fox River Academy, '31
 Bus. Mgr. Cardinal, '34
 Circulation Mgr. Student Movement, '34
"Steadfast in purpose, never wavering."

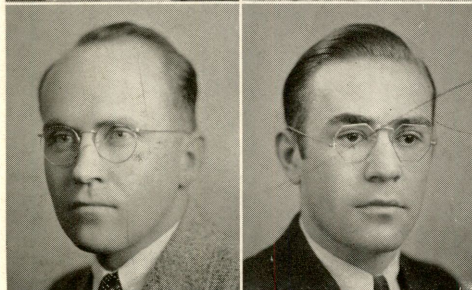
Secretarial Diploma



Alberta Evangeline Butler—Michigan
 Bethel Academy, '31
 Leader M. V. Society, '34
 Reporter Student Movement, '33
*"Forever foremost in the ranks of fun,
 The laughing herald of the harmless pun."*

Lela Harriet Pierce—Michigan
 Adelpian Academy, '30
 Asst. Sec. M. V. Society, '33
 Form Officer, '34
*"Of soul sincere, in action faithful, and in honor
 clear."*

Premedical Diploma



G. Maynard Cole—Michigan
 Cedar Lake Academy
 Night Watchman, '34
*"In every look, word, and deed,
 Nct'ing but courteous and manly."*

Stephen Dobias—Czechoslovakia
 Broadview Academy, '33
 Sec. Sabbath School, '33
 Leader M. V. Society, '32
"Stability is more essent'al in success than brilliancy."

Bernard Elmo Edwards—Michigan
 Southern Junior College, '31
 Asst. Circulation Mgr. Cardinal, '34
*"He surely has a major in Science,
 For he's quite apt in making its appliance."*

Lewis George—California
 Loma Linda Academy, '32
 Vice-President E. M. Club, '34
 Orchestra, '32-'34
*"As a student, a friend, we know he is genuine,
 Some day we shall see him a doctor of medicine."*

*Robert Green—Michigan
 Madison Academy, Madison, Tenn., '31-'32
 Nashville Agri. Normal Institute, '32-'33
*"His heart into his work he brings,
 And makes it lighter when he sings."*

Lewis L. Kline—Ohio
 Mt. Vernon Academy, '32
"Whatever he undertakes to do, he does it well."

John G. Marsh—Michigan
 Cedar Lake Academy, '29
 Asst. Supt. Sabbath School, '34
 Vice-President E. M. Club, '34
*"He meets life as if it were something worth finding
 out."*

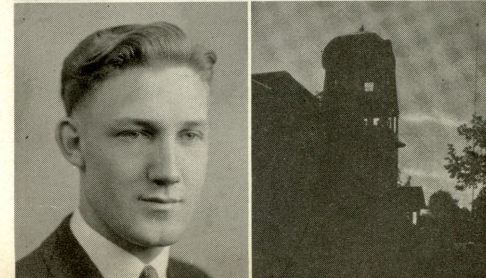
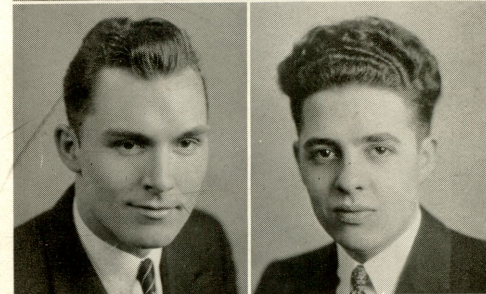
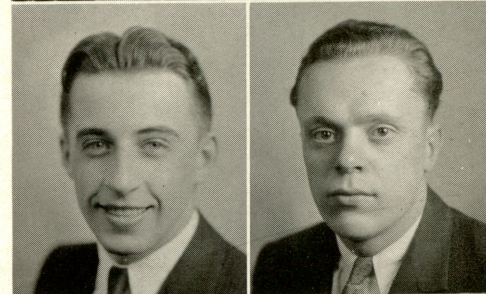
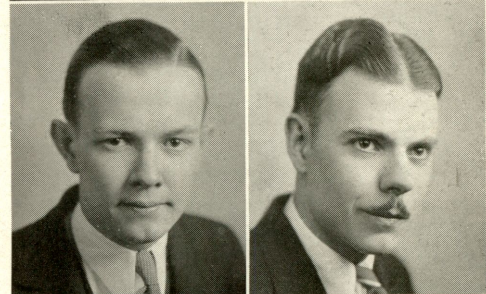
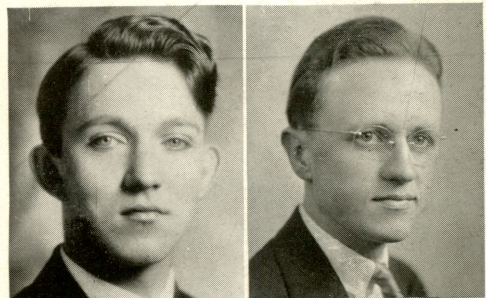
Joseph Mudry—Czechoslovakia
 Sec. M. V. Society, '32
 Teacher Sabbath School, '32
*"Enthusiasm is the fire that lights the way to achieve-
 ment."*

Earl C. Potter, R. N.—Illinois
 Chicago Conf. Academy, '28
 Hinsdale Sanitarium T. S. M. N., '31
 Moore Hall Nurse, '32-'34
*"Tis not what we wish, nor how we seem,
 But what we are that counts."*

Dennis Snider—Indiana
 South Bend Central High School, '32
 Band, '32-'34
 Le Cercle Francais, '33
*"That soul that can be honest is the only perfect
 man."*

Hugh H. Worsley—South Africa
 Helderberg College, '31
 Officer M. V. Society, '31
 Student Board of Management, '33
*"He maketh even his enemies to be at peace with
 him."*

*Edwin Bruckner, B. A.—Wisconsin
 Bethel Academy, '28
 Bus. Mgr. Student Association, '33
 Asst. Supt. Sabbath School, '33
"Wise to resolve, and patient to perform."





V. Edward Garber
Vice-President
Myrl Manley
President
Bertha W. Castor
Secretary
John M. Jansen
Treasurer

Margarete L. Ambs
Gordon S. Balharrie
M. Alberta Beardsley
Eldred J. Beardsley

Audrey L. Caffisch
Harold R. Coats
Ava M. Covington
Virginia Duffie

Ethel J. Fessler
V. Wilson Hayes
Elizabeth L. Hilbert
Mary E. Mashburn

Donald B. Meyers
Clarence O. Noblitt
Sylvia C. Pappan
Dorothy Sheddian

Mary E. Smith
John Sommer
Lois J. Walker
Raymond L. Winders

Not Pictured:
Ruth Arbuckle, John Bleuer, Carey Gartly, Gertrude Jones, Betty Kramer, Leo Thibeau, Ruth Whitfield.

J
U
N
I
O
R
S

AIM

We Take Up the Cross

MOTTO

Wholly Consecrated

FLOWER

Violet

COLORS

Purple and White

S
O
P
H
O
M
O
R
E
S





F
R
E
S
H
M
E
N

ACADEMY JUNIORS

Albert Ambs, President
 Helen Stevens, Vice-President
 Allan Buller, Secretary-Treasurer
 Mabel Amen
 Bennett Beardsley
 Naomi Donley
 Frances May
 Harold May
 Dora Reed
 Virginia Smith

Colors

Burnt Orange and Ebony

ACADEMY SENIORS

MOTTO

To Know; To Grow; To Go; To Glow

COLORS

French Blue and Turquoise

FLOWER

Blue and White Sweet Pea

Ardin V. Larson
 U. of Wisconsin High, '31-'33
 Class President, '34
 Band, '34

*"Quick in action, alert in thought,
 His every word with meaning fraught."*

Helen Frances Smith
 Vice-President Senior Class, '34
 Board of Management, '33
 President Junior Class, '33

*"Into every action of life she weaves faithfulness and
 loyalty."*

Alice Elizabeth Hoen
 Sec.-Treas. Senior Class, '34
 Orchestra, '31-34
 Crown Princess Sucimpase, '33

*"Modest, quiet, of gentle grace,
 In the world of business she'll find her place."*

Hilda Adella Habenicht
 Assoc. Academic Editor S. M., '33
 Queen Sucimpase, '34
 Spanish Club, '34

*"Her life displayed real art,
 In blending thus her talents
 With a kind and generous heart."*

Fenton L. Hopp
 Viroqua High '31, '32
 Boy Scouts '31, '32
 Inter-class Basketball '31, '32

"What he wills to do, he does with a will."

Alice Juanita Love
 Cardinal Staff, '34
 Academic Editor S. M., '34
 Crown Princess Sucimpase, '33

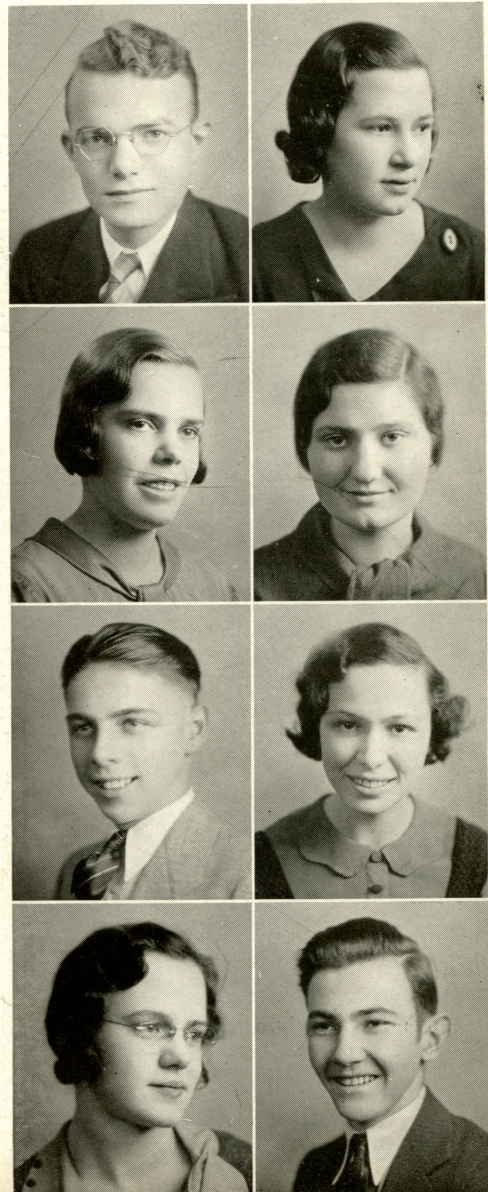
*"She was very charming, full of playful humor,
 And also of honest dignity and pride."*

Barbara Helen Phipps
 Board of Management, '34
 Assoc. Academic Editor S. M., '33
 Queen Sucimpase, '34

*"A smiling countenance, a hearty laugh,
 In making life happy counts more than half."*

Ronald W. Straw
 Madison High, Tenn., '31-'33
 President Junior Class, Madison, '33

"I am not bound to win, but I am bound to be true."





E. M. C. Academy

Connected with the College and working in harmony with its regulations is a lesser, but nevertheless important, body, known to all upper classmen as "the academics." They are not large either in number or in stature, but they sturdily do their part to fill their little niche and help to uphold the standards which the older and wiser have set for them.

They have their clubs and organizations, of which the Sucimpase, under its Queen Mother, Mrs. Leona Summey-Burman, is a good example. It consists of all the academy girls, from whose number presiding officers are periodically chosen. Every girl who graduates from the Academy looks with regret upon her subsequent loss of membership in this interesting and instructive organization.

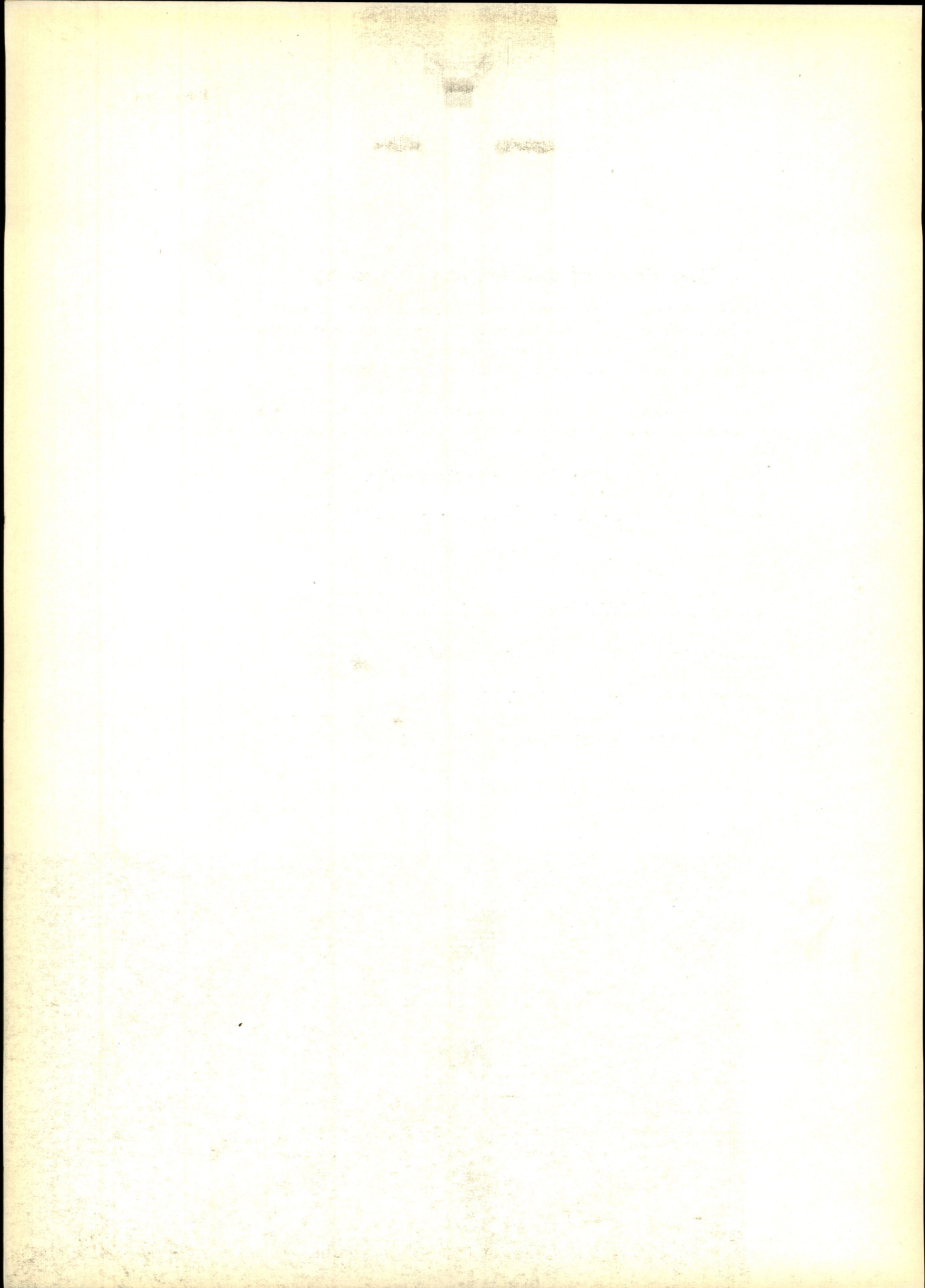
The "academics," too, have their own special play-hour. Every Tuesday and Thursday afternoon the steady click of skates and the joyful shouts of volley ball "fans" rise from the recreation hall. Miss Granbois, the supervisor, seems to enjoy the fun as heartily as any exuberant prep-student.

The academic students feel especially fortunate in having the advantage of experienced teachers. They have access to the library of over sixteen thousand volumes, and they may have a part in the use of the good laboratory equipment which the E. M. C. Science Department offers. The academy graduates have the advantage of continuing their education in close proximity to old friends and schoolmates.

The **C**ollege by the riverside,
where all **A**bout are influences
favoring a well-**R**ounded education, is
divided into nine **DEPARTMENTS.**

Arts, professions, and trades are **I**ncluded
in the courses offered. The **N**eeds of
each individual are thus met, so that **A**ll may
find a complete preparation for **L**ife.

Senior Class of '34



Department of Religion and Philosophy

"Go ye into all the world and preach the gospel to every creature." This commission given by Christ has come to us through the centuries. The aim of the Department of Theology is to give a training to young men and women that they may be able to fulfill that command.

The function of this department is two-fold: first, to give the student a knowledge of the Bible, which embodies the cardinal doctrines of Christianity; second, to teach the student how to present that knowledge, which is salvation through Christ, to an unbelieving world.

The Seminar is the laboratory for the ministerial student, because here he puts into practice what he has studied in the class room. Each Sabbath morning at 8 o'clock—the most spiritually refreshing time of the week—the theological students gather in Birch Hall to devote the hour to practical homiletic exercises.

On alternate weeks, one of the ministerial students speaks before the Seminar, helpful criticism being offered by Pastor F. B. Jensen, instructor in the Theological Department. It is inspiring to the members of the Seminar to watch the progress the students make as they speak from time to time. Twice a month a Bible study is given, and discussion follows on how to meet the different problems which confront the Christian worker.

The aim of the Seminar is to give every member such a training that he may be in word and in deed a workman approved of God, one "who needeth not to be ashamed, rightly dividing the word of truth."





Department of Biological Science

For premedical and pre-nursing students especially, the Department of Biological Science furnishes an understanding of the principles of anatomy, physiology, and hygiene necessary to healthy living. Biology gives an insight into animal life from the amoeba to the vertebrate. In vertebrate zoology, budding surgeons study exhaustively the cat, whose anatomical structure is similar to that of the human being.

Theological and normal as well as scientific students study in physiology and anatomy the human body and its functioning. Pre-nursing students predominate in bacteriology, health principles, and survey of nursing.

To stand straight, to sit erect, to walk correctly, to coordinate muscular action harmoniously, to breathe deeply, to move adroitly and with rhythm and grace—all are learned in the men's and women's divisions of the physical education class.

Department of Education

To provide properly trained teachers for our elementary schools and academies, and to furnish the kind of administration and supervision that will bring about more efficient service is the aim of the Department of Education.

This Department makes possible a general understanding of our schools and their work. Most of the conference workers, if not actually in the teaching profession, are connected indirectly with our schools in various capacities, such as board members, ministers, and Bible workers.

The curricula provided by the Department of Education in cooperation with other departments make possible the training of teachers for the primary grades, teachers for the upper grades, and teachers for the secondary schools. Practice teaching is provided in the two training schools—the academy and the elementary school.

In this way many weeks of actual classroom experience can be obtained by prospective teachers. They learn the application of the theories of teaching and learning which they study in the education courses, and they learn to face and solve the problems that arise from day to day in dealing with young and growing minds.





Department of English Language and Literature

All up-to-date English teaching aims to bring the student three things: the power to express freely and easily his own thoughts and feelings in speech or in writing; the ability and the desire to share ideas in genuine appreciation and perusal of the world's great literature; and a sufficient knowledge of the rules of grammar and usage to use the mother-tongue with a reasonable degree of accuracy.

At E. M. C. the freshman rhetoric class meets in three sections. Enthusiastic classes in English methods may be found trying out what they have learned in the Preparatory School, while the Student Movement is used as a laboratory for the classes in journalism. Eight of the 1934 seniors are majoring in English.

Various projects in journalism and literature may be seen by those who attend the Youths' Congress in June, as they will be displayed at that time.

Survey and period courses in English and American literature, courses in journalism, public speaking, and composition of various sorts equip the students to read, write, and speak with style.

Not all delve into the deep things of theology, nor explore the mysteries of the world of science; not all enter the teaching or business professions, or one of the several practical trades taught at E. M. C.; but no one passes through a single day without the use of language, spoken or written—more likely both. To use it well is an art and a science that teachers in the English Department strive to impart.

Department of Fine Arts

“Music the fiercest grief can charm,
And fate’s severest rage disarm.
Music can soften pain to ease,
And make despair and madness please;
Our joys below it can improve,
And antedate the bliss above.”

—Pope

For centuries bards and balladiers have sounded eulogies in praise of music. Its value and power is unlimited. Emmanuel Missionary College, realizing the essential place of music in life and living, has provided ample opportunities for instruction in the art.

The Fine Arts Department develops an appreciation of the finer, nobler things of life. Instruction on many musical instruments produces well-trained musicians. The foundation instrument, the piano, together with the stately organ, the celestial-toned violin, the wood and brass wind instruments, and the God-given vocal organs are employed by trained students in the varied musical programs of campus functions.

Group experience is gained by participation in the glee clubs, orchestra, band, and string ensembles.

Instruction is also presented in music theory. Harmony, music composition, counterpoint, school music, and several other courses attract those who wish to gain a balanced knowledge of music.





Department of Foreign Language and Literature

"Each in his own tongue"—the nations of the earth sing their sorrows, spread their visions on canvas, and write out their hopes and fears. Once upon a time, France, Spain, and Germany were remote, dream-like lands of legendary charm to us; and to them, America was a raw wilderness, where only the bold dared beat a path.

But it is a different story now. Travel in Europe is the privilege of the common man. The opportunity may come to him any time. It is only a matter of intelligence to prepare himself to understand and be understood in a language other than English. Study abroad for advanced degrees is increasing yearly. To those who are training for the mission field, one or more foreign languages are indispensable. Scientific research demands a knowledge of French or German, or both. Teachers who do not expect to continue their training abroad, will, nevertheless, have to deal with children and youth of foreign parentage. There is practically no occupation today which will not bring contact with "the stranger within our gates."

Then there is the purely pleasurable angle of language study—the thrill of satisfaction that comes in being able to read the great masterpieces of a country in their originals or to converse intelligently with a native. Pantomime and Pidgin English may suffice for the request of a cup of water or a night's lodging, but only a speaking knowledge of the tongue our foreign brother uses can be the "Open Sesame" to his soul.

To the Christian this spirit of world fellowship is essential if he would have that mind which is in the Good Shepherd when He says: "Other sheep have I also, which are not of this fold." And they must be won—"each in his own tongue."

Department of Physical Science and Mathematics

The Science Hall is one of the busiest and most interesting spots on the E. M. C. campus. This is the headquarters of the Department of Physical Science and Mathematics. During the past year about 350 students have been enrolled in this department and have spent their afternoons in the eight laboratories.

The students in physical science including physics and chemistry may be divided roughly into four classes. Perhaps the most prominent is the class in the premedical course. They spend most of their second year in the laboratory, and they find it very interesting. Another class is composed of those majoring in science. Then there are those who plan to do dietetic or home economics work. These girls study chemistry so that they can make their work in foods truly scientific. Lastly comes the class of those who are taking one of the courses in science to meet graduation requirements. These frequently come with great fear and trembling. They think chemistry is something at which to shiver, and they hold it in horror. But they soon become acclimated, and most of them even come to enjoy laboratory days.

The mathematics section of the department is smaller. Still there are many who enjoy exercising their brains in the field of higher mathematics.





Department of Social Science

History is a study of the conditions, the aims, and the aspirations of peoples of the past with their successes and failures, the study of which enables one to interpret conditions and tendencies of the present.

The times in which we live are times of doubt, skepticism, and social upheaval, with democracies falling and autocracies rising to take their place; hence it seems necessary that the young people of today should be studying the underlying principles of government, the causes of skepticism and social unrest, and should be given a scientific and substantial solution to these problems.

Sociology is a study of conditions of society with the causes of those conditions and a possible solution. Philosophy is the search for an explanation of things, a search for the ultimate cause. To the Christian this ultimate cause is God. No subject rightly conducted can better fortify one against present day skepticism and sophistry than this. Consequently it is planned to add courses in political science, sociology, and the philosophy of religion and life in this department next year.

Of the college graduates this year eight are majoring and six are minoring in the social sciences. This makes a total of 41 per cent of the class of thirty-four who are either majoring or minoring in this field. Of the entire enrollment of the student body 53 per cent are enrolled in some of the social science courses.

Department of Applied Arts

The Applied Arts Department gives courses in agriculture, home economics, library science, printing, and secretarial training.

The agricultural classes aim to carry out God's instruction by working practical experiments in His great out-of-door laboratory. In the classroom are studied botany, plant pathology, entomology, agronomy, and kindred subjects.

Home economics trains young women to become teachers, matrons, dietetic internes, and home-makers.

Library science prepares the student to assist in the College library and, upon graduation, to take charge of a school library. Aside from instruction in library work, the course aims to increase the student's knowledge of books.

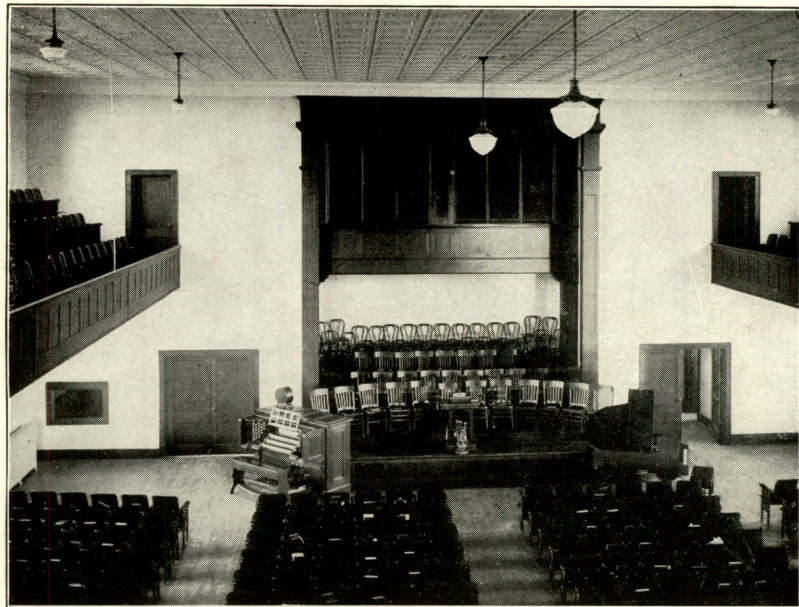
The College Press enjoys the patronage of many firms in neighboring towns and cities, and furnishes work for about twenty students. Job-press, cylinder-press, hand composition, and linotype work are done. Classes in machine operation and hand work give the students both a theoretical and a practical training.

The two-year course in secretarial training is designed to prepare for various types of private secretarial and clerical work. Classes in shorthand, typewriting, accounting, and business correspondence are the tool subjects. Required courses in English, Bible, and social science give the necessary background for higher types of office work.





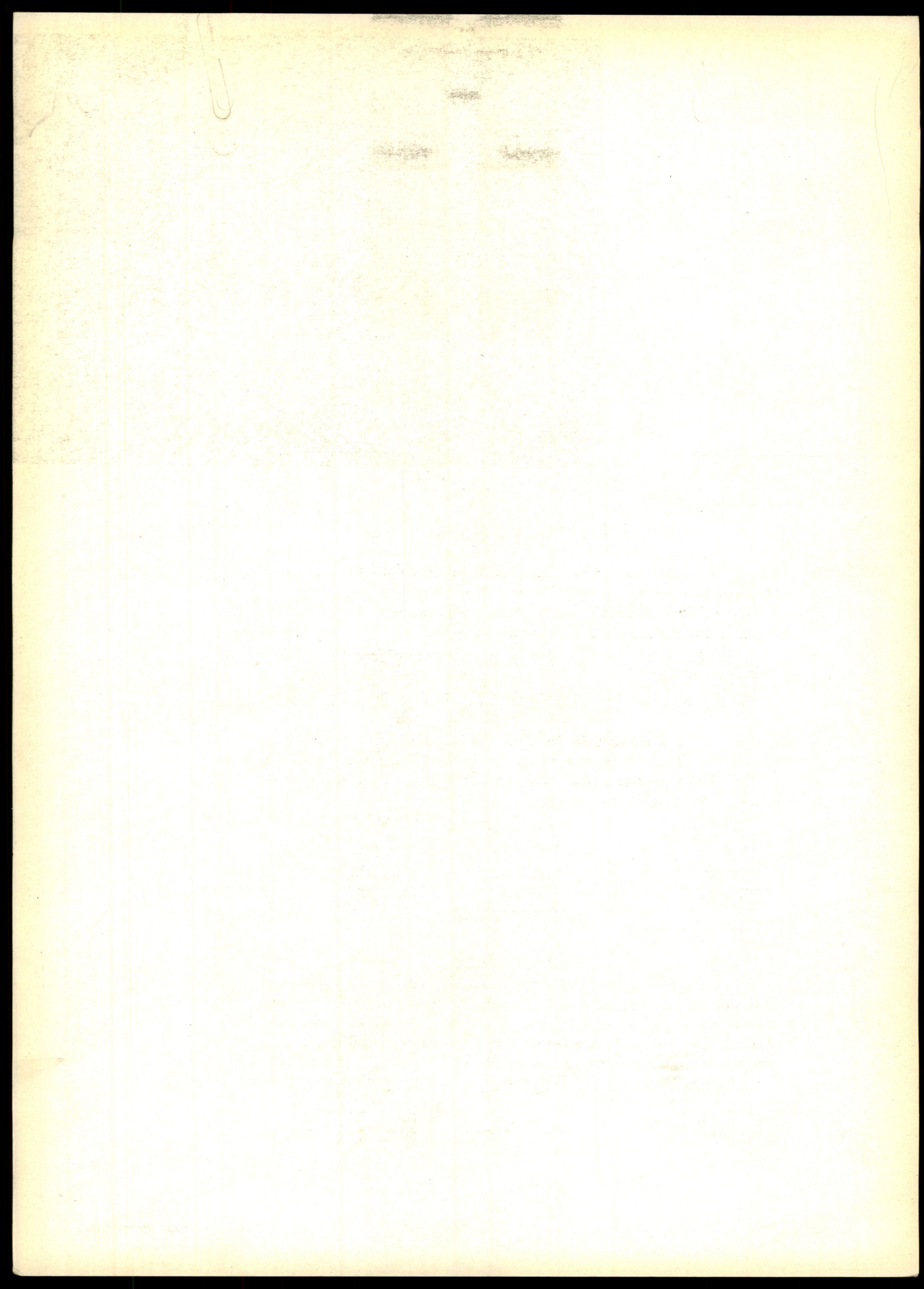
The Auditorium



and the Chapel

*E. M. C. C*ultivates student initiative
in its **ACTIVITIES.** *Industrial,*
*educational, and R*eligious, the organizations
here pictured *D*o much to foster
enthusiasm and develop *I*nterest in the different
fields. Among such values, *N*ot the least in
our memory is the joyous *A*ssociation
with the friends we are loth to *L*eave.

Senior Class of '34





Ministerial Seminar

The activity of the Ministerial Seminar is not confined to practical help in technique, but springs into joyful service among the numerous churches that depend on E. M. C. each week. Under the leadership of Pastor F. B. Jensen this organization has assumed a new and far-reaching aspect. Enthusiasm in true service pervades.

Harold Coats
Herbert Berg
Sherman McCormick
Leon Nieb
John Shull
Virginia Duffie
Donald Crandall

President
Vice-President
Secretary
Asst. Secretary
Publicity Agent
Pianist
Chorister

John Lipps
Gordon Balharrie
Grace Clark
Alice Bodine
Elizabeth Sherman
Dorothy Shedd

Missionary Volunteer Society

The Y. P. M. V. at Emmanuel Missionary College is a life-saving station. From the home base young workers sally forth to scatter sunshine in the neighboring communities.

Mrs. Grace Stevens
James French
Lois Walker
Clarence Katt
Irene Wakeham
Elsbeth Graefe
John Shull
Harry Taylor
Gilbert Holmes
Elton Dessain
Esther Ambs
Alpha McPherson
Arthur Tucker

Leader
Asst. Leaders

Secretary
Asst. Secretary
Literature
Jail Band

Old People's Home
St. Joseph Orphanage
Transportation

Pastor F. B. Jensen
Lois Walker
Clarence Hoskin
Oliver Pitts
Ione Wright
Ruth Arbuckle
Virginia Duffie
Ray Olmsted
Alton Lorren
Gordon Balharrie
Esther Ambs

Sabbath School

The Sabbath School not only draws its members to itself each Sabbath, but reaches out into the homes, into the surrounding countryside, into far distant lands. It builds Christian habits of daily communion with God, it stimulates self-denial and sacrifice, and it promotes world-wide fellowship through Jesus Christ.

L. N. Holm
Ray Olmsted
Raymond Winders
Edwin Bruckner
I. Ragnhild Berner
Rebekah Steen
Frances Stevens

Leader
Asst. Leaders

Secretary
Assistant Secretaries

L. N. Holm
Gilbert Holmes
John Marsh
Clarence Krohn
Rebekah Steen
Verna Wegner
Mildred Clarke



Student Association

All teachers and enrolled students constitute the Student Association, which fosters the activities of the school, both social and religious.

The Board of Management is the governing group of this organization, working in collaboration with the student body.

William T. Hodgson	President
Clarence Katt	Vice-President
Lorna Lindsay	Secretary
Opal Miller	Asst. Sec.

Student Movement

"The Student Movement," the voice of the College, serves as the most efficient medium of binding the school with the world; also it provides a laboratory for the journalism class.

Alberta Beardsley	Editor	James Hagle
Elton Dessain	Associate Editor	Harry W. Taylor
Opal Miller	Associate Editor	Sylvia Pappan
Robert Hervig	Business Mgr.	
Arthur Tucker	Circulation Mgr.	

1933-34

Every Man's Club

The chief function of the "Every Man's Club" is to teach the young men of Maple Hall the art of Christian living and to assist them in solving their problems. The 1933-34 slogan, "Ethics Makes Culture," reveals the spirit of this organization, directed by Dean Burman.

John Shull	President	Myrl Manley
Lewis George	Vice-President	John Marsh
Sheldon Ritter	Secretary	Harold Moll
Gordon Balharrie	Asst. Sec.	Percy Marsa

Forum

As a place of popular assembly the public square of ancient Rome has its counterpart in the Girls' Forum of E. M. C. Here the girls of Birch Hall, under the guidance of Dean Lamson, gather every other Monday night to develop the cultural as well as the intellectual side of their education.

Ava Covington	President	Lorna Lindsay
Thelma Herrmann	Vice-President	Verna Wegner
Carey Gartly	Secretary	Dorothy Sheddan
Violet Erickson	Asst. Sec.	Elizabeth Hilbert





Le Cercle Francais

To promote a better understanding and create a deeper love for the French language and the French people, *Le Cercle Francais*, under the direction of Dr. Ella Iden-Edwards, holds informal programs, during which English is forgotten and an understanding of French becomes a necessity.

Irene Wakeham	President	Clara Craig
Rolland Howlett	Vice-President	John Wade Row
Frances Schadel	Secretary	Evelyn Erickson
Irma Berner	Treasurer	Paul Evers
Sylvia Pappan	Chef	Frances Summerton

El Circulo Castellano

Many an opportunity to leave the U. S. A. and travel imaginatively to Spain and the South American countries is offered to the Spanish students by *El Circulo Castellano*, directed by Miss Mildred Granbois.

Sylvia Pappan	President	Arlene Marks
Arlene Marks	Vice-President	Harold Colburn
Evelyn Harrell	Secretary	Florence Peugh
Mary E. Smith	Treasurer	Gordon Skeoch
	Chef	Virginia Wier

De Deutsche Sprachverein

From the signing of the initiatory petition to the willing preparation of parts for the programs, the 1934 E. M. C. German constituency united eagerly to further the year-old *Deutsche Sprachverein*.

Herbert Berg	President
Albert Patzkowsky	Vice-President
Virginia Duffie	Secretary

Cultural Arts Guild

Second youngest in the circle of clubs is the Cultural Arts Guild, organized to fill a long-felt need for some form of social activity along purely cultural lines. Professor H. M. Tippett guides the functioning of the organization. All upper classmen and interested faculty members may join the Guild.

Bertha Castor	President	Irene Wakeham
Elton Dessain	Vice-President	John Jansen
Marjorie Hamp	Secretary	Gordon Balharrie
Dorothy Sheddan	Asst. Sec.	Thelma Herrmann

Home Economics Club

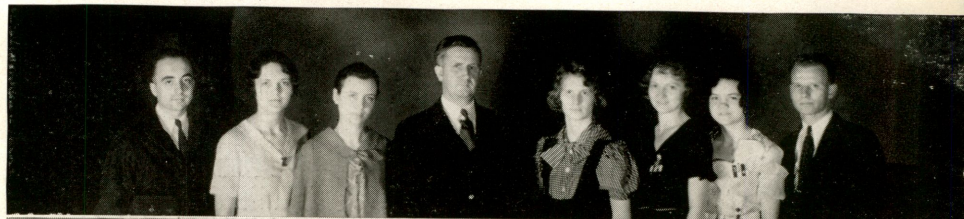
With the assistance of Miss May Stanley nineteen girls organized a Home Economics Club to foster interest in the useful arts. Social, practical, and educational have been the programs presented.

Isabel Medford	President
Mildred Ferguson	Vice-President
Harriett Hanson	Secretary

Typothetae

The workers in the College Press and the students in the printing classes make up the membership of the Typothetae Club, sponsored by Mr. J. B. Krauss. To create a social atmosphere and to stress the value of the printing craft are purposes of the organization.

Sheldon Ritter	President	George Schultz
Arthur Tucker	Vice-President	Rolland Howlett
Margarete Ambis	Secretary	Gordon Anderson
Donald Vollmer	Treasurer	Clarence Kohler





Orchestra

The orchestra, under the direction of Mr. Willard Shadel, has presented three delightful concerts during the school year, aside from appearances on various other programs.

The fall and spring concerts featured music of special interest—"Rosamonde," an overture by Schubert; "Andante E Rondo Ongarese" for the bassoon; a program of Von Weber music; and a piano concerto played by Professor J. W. Osborn.

Twenty-eight members make these occasions possible.

College Band

The E. M. C. Concert Band, composed of fifty members, is definitely a concert organization. Besides two programs, many open-air sacred concerts have been given this year. These Sabbath afternoon musicals sometimes included the singing of old hymns by the school family to the accompaniment of the band.

This lively organization instills school spirit into the students and cultivates appreciation for the higher type of band music.

Ladies' Glee Club

Besides giving several numbers during the year, the Ladies' Glee Club, conducted by Mr. H. B. Hannum, united with the men's organization for a Saturday night program. There are fifteen members besides the five officers.

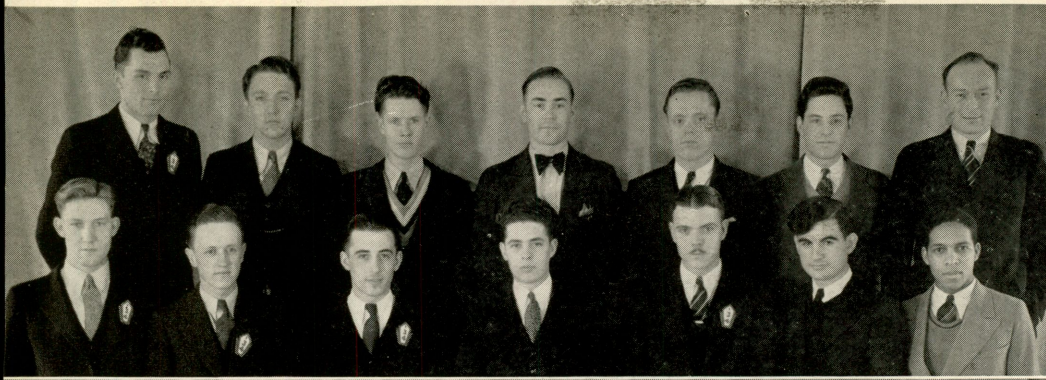
- | | |
|------------------|----------------|
| Arlene Strobel | President |
| Yvonne Reed | Vice-President |
| Violet Farnham | Secretary |
| Dorothy Sheddan | Librarian |
| Francella Dorner | Pianist |

Men's Glee Club

Twenty-three men selected from the student body by trial auditions compose the Men's Glee Club, directed by Mr. Willard Shadel. The club endeavors to present the beauties of voice culture through group cooperation. Numbers by such composers as Gould, Donizetti, Victor Herbert, and Dudley Buck are included in the repertoire.

- | | |
|------------------|-----------|
| Clarence Hoskin | President |
| Lewis George | Secretary |
| Fremont Buchanan | Librarian |
| Ingram Irving | Pianist |





Premedical Seniors

One of the first things a visitor to E. M. C. campus notices is the exuberant enthusiasm and boundless optimism remarkable on the countenance of an earnest premedical student.

Besides taking care of his studies, doing his domestic labor, and taking part in student activities, a premedical student has time for the dissection of cats, the synthesis of camphor, or finding the period of a pendulum.

Ask a premedical student why he has chosen such a difficult course of study and you will discover that he has caught a vision of a world in need. He intends to do all within his power to finish the work of God in the earth by means of the right hand of the Third Angel's Message—medical aid to sufferers in body along with spiritual aid to sin-sick souls.

Pre-Nursing Students

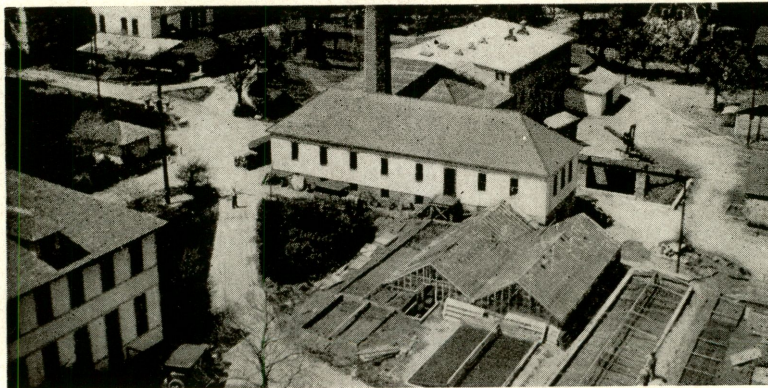
The increasing standards in the field of nursing education make it necessary for those desiring to take the course to have first one year of college work. The pre-nursing course consists partly of some of the subjects which previously have been given during the first year of training. The student is thus relieved of much of the heavy theoretical part of the curriculum and is able to obtain more thorough practical work.

In addition the student has the advantage of added maturity and the poise that comes from a background of college life and some cultural subjects.

This is the first year that the pre-nursing course has been given at E. M. C. There are eleven students completing it this year.



The College Press



The Laundry and the Greenhouses



The College Barns



Irene Wakeham
Editor

Leona Summey-
Burman
Faculty Adviser

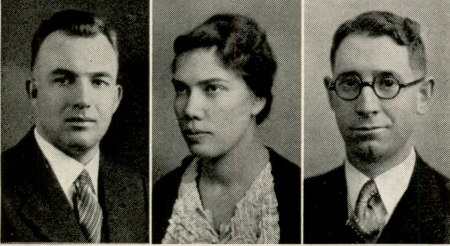
Arthur Tucker
Business Manager



Elton Dessain
Associate Editor

Herbert Berg
Art Editor

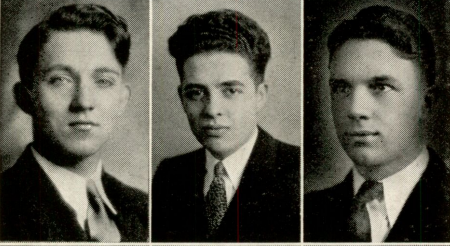
Opal Miller
Associate Editor



William T. Hodgson
Circulation Manager

Alfaretta Johnson
Asst. Art Editor

Glenn A. Houck
Advertising Manager



Bernard Edwards
Asst. Cir. Manager

Dennis Snider
Picture Editor

Clarence Katt
Asst. Ad. Manager



Rebekah Steen
Snapshot Editor

Alice Love
Academic Editor

Lewis Kline
Snapshot Editor



Ada Dean
Roster Editor

Lorna Lindsay
Feature Editor

Lillian Larson
Activities Editor



Alberta Butler
Stenographer

Lela Pierce
Stenographer

Ruth West
Stenographer

The *C*lass of '34 would
express *A*ppreciation to the friends of
E. M. C. for their *R*eally splendid support of
our *C*ardinal. *D*ue to their friendly
attitude, the advertising and **INCIDENTALS**
which add spice to this volume are possible. *N*or would
we forget to recommend our *A*dvertisers
to our successors when we *L*eave.

BUDGET ECONOMIES

Have Reduced Purchasing Power to a Minimum.

CONSULT US
in Regard to Our Service.

Cooperation

Quality

Reasonable Price



Just telephone

89 W

THE COLLEGE PRESS

"Thoughtful Printing"

BERRIEN SPRINGS, MICHIGAN

J. F. Schaefer

**General Hardware
Plumbing & Heating
Complete Tin Shop**

OUR MOTTO:

**Right Prices
Courteous Treatment**

**Phone 32 F 2
BERRIEN SPRINGS
Michigan**

J. L. WHETSTONE

Phone 22
Berrien Springs

Complete Service
Mechanical, Electrical
Body and Fender

Car Painting Our Specialty

Willard
Batteries

Firestone
Tires

OFFICAL AAA

Plant B
LaGrange, Ill.

College

Wood

Products

Plant A
Berrien Springs, Mich.

SECURITY



SOUND managerial policies and long, successful experience have provided us with sufficient equipment, adequate personnel, and ample resources to render dependable service as artists and makers of fine printing plates. That you will be secure from chance, is our first promise.

JAHN & OLLIER ENGRAVING CO.
817 West Washington Blvd., - Chicago, Illinois

"Jahn and Ollier Again"

In the foreground - Ft. Dearborn re-erected in Grant Park on Chicago's lake front.
Illustration by Jahn & Ollier Art Studios.

CANVASS THIS SUMMER

in the Lake Union Conference where 18,650,488 judgment-bound souls await the Third Angel's Message. No messenger is so welcome as the messenger of hope. No message so appeals as does the message of the Third Angel.

INFORMATION REGARDING TERRITORY

Gladly furnished by
the secretary of the

Lake Union Conference
PUBLISHING DEPARTMENT

Cary's Flower Shop

(Formerly Tornquist's)



Benton Harbor

Next to Liberty Theater

Dr. C. H. Woolgar

Dentistry

PHONE 200

BERRIEN SPRINGS, MICH.

The SAFEST
QUICKEST
Most CONVENIENT
Way to
CHICAGO

Ride the South Shore Line,
with its comfortable all-steel
trains that carry you in safety
at a new low-cost fare. Go to
Chicago by South Shore Line.

**Chicago, South Shore &
South Bend Railroad**

DRAKE DRUG CO.

—COMPLETE LINE—

Drugs
Sodas

Cosmetics
Candies

Prescription Filling Our Specialty

Phone 6

Berrien Springs, Michigan

JOIN THE FIFTY-FOUR MILLION

This Bank is one of the 15,434 Banks in the United States serving 54,520,240 depositors whose accounts are insured by the FEDERAL DEPOSIT INSURANCE CORPORATION up to the sum of \$2,500.00.

Berrien Springs State Bank
43 years in your service

Compliments of

The South Bend Tribune

The Leading Newspaper of Northern Indiana and Southern Michigan

SOUTH BEND

INDIANA

Calendar of Events

- Sept. 11—Students from far and near register for school year
13—Classes open
15—Fall Week of Prayer begins
16—Faculty welcomes students with handshake
26—Students launch Harvest Ingathering campaign
- Oct. 11—Colporteur convention draws interest
12—Dr. Lockridge lectures by historic St. Joe river
15—Students visit Century of Progress Exposition
28—Professor Hoen lectures on light rays

Kwik-Way Service Garage

R. G. Hendrick Prop.

Specialist on motor Valves

**Complete Motor Service, Mechanical & Electrical; Also Body
Work & Painting**

Exide Batteries

Goodyear Tires

College Ave.

Berrien Springs, Mich.

Cutler & Downing COMPANY

Hardware and Seeds

Nursery Stock

Everything

for

The Farmer

Visit our new nursery sales ground on
U. S. 12 just outside of town. The most
complete display of nursery products in
the middle west.

Benton Harbor

C. R. SPARKS AND COMPANY

**Best Materials
in
Your House**

**Best Coal
in
Your Stove**

**Means
HOME SWEET HOME**

Berrien Springs

O. SKINNER

SHOE HOSPITAL

Expert Repairing

Berrien Springs,

Michigan

**ST. JOSEPH - MICHIGAN
FRUIT ASSOCIATION**

Feeds Seeds
Spray Materials Fertilizers
All Needs for the Farmer

Phone 13

Berrien Springs

Greetings to class of 1934

Gafill Oil Co.

Sun Ray Station



- Nov. 19—Student Association sponsors hike*
23—Dr. Kent and Dr. Rainey visit E. M. C.
30—Thanksgiving Recess begins
Dec. 2—Student Association entertains students remaining on campus
9—Expression students give recital
16—Orchestra gives concert
19—Senior class organizes
21—Christmas Recess begins
Jan. 2—Students return from vacation
6—Elder Prescott lectures on archaeology
17—Girls give miscellaneous program to help promote skating rink project
20—Motion pictures shown
22—
26—Semester examinations provoke study
29—Second semester begins
Feb. 1—Seniors launch Cardinal campaign
3—Bacretas Club from Battl eCreek presents program of sacred music
12—Traning School children give Washington program in chapel
15—Student Association announces New Slogan Contest
17—Band Concert attracts crowd of eight hundred
20—Board banquets in Birch Hall Assembly
25—Forum girls give reception for E. M. Club members
27-29—Seniors and others smile for Cardinal pictures

Emmanuel Missionary College

The School of Opportunity

OFFERS

Courses leading to the Bachelor of Arts Degree
with specialization in

Business Administration
Elementary Teacher-training
Secondary Teacher-training
Theology

Courses leading to Bachelor of Science Degree
with specialization in

Agriculture
Home Economics
Scientific Research and Medicine

Courses leading to a Diploma in

Music
Dietetics
Pre-Medicine
Pre-Nursing
Secretarial Training

EMPHASIZES CHARACTER EDUCATION

WELCOMES YOU

Write for information and literature to

PRESIDENT

Emmanuel Missionary College
Berrien Springs Michigan

ENJOY THE ADVANTAGES OF

**Modern
Electric
Cookery**

Hotpoint & Westinghouse

Electric

Cook

Ranges

With

**Cleanliness—Healthfulness—Safety—Economy
Speed—Simplicity**

Displayed & Sold by

THE
INDIANA & MICHIGAN
ELECTRIC COMPANY

Central Basket Co.

Baskets & Berry Crates

Write or Call

Phone 50

Berrien Springs

- Mar. 3—Mrs. Taylor presents her Seleste Ensemble*
10—Professor Jensen lectures on Mormonism
17—Glee Clubs announce "Spring has come!"
24—Student piano recital precedes motion pictures showing home life
26—Juniors march into chapel
29-April 1—Spring vacation brings momentary relief
- April 2—Spring Week of Prayer opens*
7—Motion picture, "Simba," shows wild life of Africa
13-15—E. M. C. welcomes seniors from academies
22—Student Association gives evening of entertainment
28—Expression students give recital
- May 5—College Orchestra gives program*
?—School picnic brings sunburn—and gaiety
?—Senior-Junior picnic—ditto
19—Band gives concert
20—Students march—or study for final examinations
- June 1—Friday night Consecration Service*
2—Baccalaureate sermon
2—Class night program
3—Alumni Dinner
3—Commencement
4—Youths' Congress

Flowers

Ambulance Service

C. K. Nichols

Berrien Springs, Mich.

Funeral Director

Phone 55

OPEN ALL THE YEAR

Save time and money by enrolling at once in the Home Study Institute. You can enjoy a pleasant summer vacation and at the same time earn substantial credits toward graduation.

We offer courses in Bible, English, History, Mathematics, Education, Languages, Bookkeeping, Stenography, Typewriting, and other subjects.

Our school is open all the year. Payments in easy installments. A liberal discount for cash. Write us for particulars.

Home Study Institute

TAKOMA PARK, WASHINGTON, D. C.

Established 30 Years

LEMON TREES

OPTOMETRISTS

222½ South Michigan Street South Bend, Ind.

Patients all over the world

Now If Your Eyes Require Glasses

they will be properly prescribed, correct in styling to be inconspicuous—yet enriching your personal appearance. Always painstaking craftsmanship—regardless of the amount you prefer to expend, and unvarying quality of materials so you may find Better Vision with Greater Comfort.

**REASONABLE
DEPENDABLE
PERSONAL SERVICE**

BROKEN LENSES DUPLICATED IN OUR OWN LABORATORY





Be in School Next Year The Watchman Way!

More students earned scholarships with the new 10c WATCHMAN last summer than in any other one year since before the depression. THIS is a magazine reading age. The WATCHMAN is "America's most attractive religious journal." And the price is only a dime! No wonder our students are flocking to the WATCHMAN scholarship plan, as a means of getting back to school.

"I just want to tell you how I am enjoying selling THE WATCHMAN again. The new price certainly must have some effect on the sale. Last Thursday I sold fifty in three hours and fifteen minutes." So writes a scholarship worker who has averaged \$1.00 an hour.

For information regarding the sale of single copies or the new yearly subscription plan, write,

CIRCULATION DEPARTMENT

The Watchman Magazine

"The Student's Friend"

Nashville,

Tennessee

Faculty and Members of Emmanuel Missionary College

We thank you for the patronage you have graciously favored us with this past year. And now we are looking forward to the pleasure of assisting you with the planning of your wardrobe before leaving for home; or vacation-bound.

Sam'l Spiro & Co.

The home of Hart Schaffner & Marx Clothes
South Bend, Indiana

DR. W. N. YEAGER S. D. A.

I have established a dental chair in my residence at 642 North Main Street, where I am prepared to do dental work three half days per week, Wednesday, Friday, and Sunday afternoons.

I shall be in my Benton Harbor office the remaining time.

House Phone—Berrien Springs 204



Bean Sprayer Sales and Service

BEAN
Sprayers Wipers
Washers Graders
Dusters Gas Engines

Phone 8791

Factory branch of John Bean Mfg. Co.
Lansing, Mich., San Jose, Calif.

Compliments
of
a
Friend

MONGER-GAMPHER

LUMBER COMPANY

Wholesale Lumber Dealers in

Close Grained, Soft Textured
Arkansas Yellow Pine
California Sugar Pine
Ponderosa Pine
Ironing Board Stock
Step Ladder Stock
Chair Stock
Northern Hardwoods
Southern Hardwoods



L. D. PHONE 191

ELKHART

INDIANA

Your College Store

Friend of the Entire Community

Department of Agriculture

EMMANUEL MISSIONARY COLLEGE
BERRIEN SPRINGS, MICHIGAN

Practical and Theoretical Training in General
Farming, Fruit and Vegetable Growing, Dairy-
ing and Poultry Raising

**Pedigreed seed and high grade
products offered for sale**

*We are Pleased to Announce
that All Products of the*

College Wood Products

are Finished with Our Materials
Manufacturers of Lacquers, Stains, Varnishes, and
Enamels for the industrial trade exclusively.

**ADVANCE PAINT
COMPANY**

Indianapolis

Indiana

Dr. W. V. Crittenden
D. D. S.

Dental plates, crowns, and fillings

100½ W. Ferry St.
Berrien Springs, Mich. Phone 206

Barlow Bros.
LAUNDRY

*Best Equipped
Laundry in*

BERRIEN COUNTY

WEBB COAL CO.



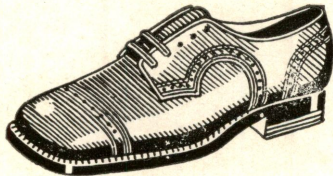
We wish to express our deep appreciation for your very valuable patronage and to extend our most hearty and best wishes to every one. For best grade coals of all kinds and genuine Semet Solvay coke call

Webb Coal Co.

Phone St. Joe 313 or call our representative

HAAS COAL CO.

FISHER'S SHOE REPAIR
Extra Quality — Reasonable Rates



See me personally
MAPLE HALL

McNALLY
SHOE SHOP

Leave orders at
College Store

Prompt Service

SHULL 5c to \$ 1.00 STORE

Berrien Springs

==== VARIETY ====

Make Our Place Your Headquarters

Our prices are right, and you will find articles you need

SEE US FIRST

FRESH . . .

And Oh, How Delicious

Wilson's Bakery Products

You, too, will be among our boosters the instant you've eaten our Bread and Pastries. Why not join the big army of satisfied patrons here?

Made of the finest ingredients on the market and carefully compounded and baked. That's the story of the finest breads made today.

Special on Tuesdays and Thursdays

Salt Rising and Gluten Bread

Wilson's Bakery

313-315 State St.

Phone 237

Just Imagine—

Arlene Strobel having to stand twice to make a shadow

Professor Tippett without a witty joke or story

Mary Gartly with her weary head on her pillow at VJS JV

Our editor without a proof of the Student Movement under his arm trudging to the print shop

Elton Dessain without an over-loaded brief case, winding his way toward the Training School

Our California Doctor too tired to enjoy to the fullest extent a skate, a swim, or a hike

Birch Hall's house nurse with a grouch when asked to bind up a cut finger

Jask Shull failing to call for his clean laundry Thursday afternoon

A tasteless soup, gravy, or hash made by our cook, Olive Cady

HILLTOP CHEVROLET

Sales and Service

The Home of the Great American Value in
AUTOMOBILES AND TRUCKS

**Repairs and Maintenance Service by Factory Trained
Mechanics**

M. H. MEYERS & CO. Berrien Springs

THE ENDERS CO.

**Dry Goods
Ready to Wear
Millinery
Shoes**

**Bargain Basement
Hoover Sweepers**

Wise Spenders Shop at Enders

BENTON HARBOR
Phone: Harbor 6145

OUR FREE CATALOG SAVES

Money for Foreign Missionaries

FOREIGN MISSIONARIES everywhere have confidence in our Missionary Bureau as the most economical source for personal supplies and mission equipment of high quality.

SECRETARIES and Purchasing Agents of Foreign Missions find that our free catalog and special discount list enables them to save money for their stations.

MISSION Boards can economize by selecting hardware, paints and other building materials from our catalog, for shipment abroad.

If you wish a Montgomery Ward Catalog, for export use only, write TODAY for a free copy.

MONTGOMERY WARD

Export Department

Chicago, U. S. A.

H. A. HOOVER

Manufacturer And Wholesaler

Hardwood Lumber

South Bend . . . Indiana

Try to think of—

Being able to use the kitchenette when you wanted to
Beeno Elmore preferring a candy bar to a juicy pickle
*Martha Wimmer and John Jansen being able to refrain from a heated argu-
ment*
Mr. Coats without advice to give
Frank Schultz getting a chemistry experiment all right
J. W. Row ever being host at a dinner table
Irma Berner being able to attend meals without a book under her arm
Bud Skeoch without a kindly word for every one
Alfaretta Johnson with Marjorie Simpson's small voice

Compliments of

A & P Store

Berrien Springs

Michigan's Finest Food Store

SAVE as you go AT PENNEY'S

Vast economies are easily achieved at Penney's. One shopping tour—and you are convinced. You discover with pleasure that you have actually saved! Prices here are always low—to help you save as you go.

J. C. Penney

- - -

Benton Harbor

W. BUCK AND SON

Everything Electrical

Kelvinator - - - - - Delco Products

Phone 161-F2 - - Berrien Springs, Mich.

Join Merely One AAA and 1,000 Will Serve You.

Ask the Man Whose Car Carries the Emblem

Also Insurance at
Cost

AAA

For More Information
Call Har. 8412

Automobile Club of Michigan

Berrien County Branch

216 E. Main St. - G. A. Cook - Benton Harbor

MAX ADLER

On the corner at Michigan and Washington, South Bend

offers you the

LARGEST and FINEST

assortment of

Young Men's Apparel

in Northern Indiana or Southern Michigan

Home of FASHION PARK, CHARTER HOUSE, MIDDISHADE,
SAWYER-SPUN Clothes; STETSON, KNOX, DUNLAP and
FINCHLEY Hats; ARROW, MANHATTAN, WILSON BROS.
Shirts; FLORSHEIM Shoes, and many others.

E. H. Power Supply Co.

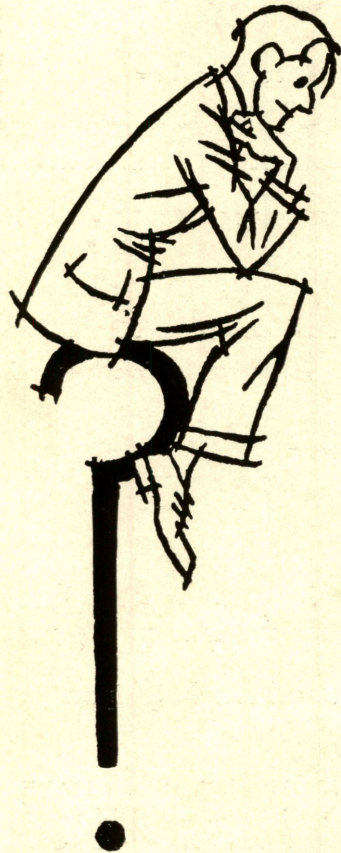
**Pipe, Valves, and Fittings
Plumbing Supplies**

Phone 1161

Niles, Mich.

211-215 N. Ninth St.

ON THE FENCE?



College expenses, Vacation employment — do these questions find you on the fence?

DECIDE NOW

— while your vacation is yet future—that you will not lean on dad another year—his load is heavy enough now.

EARN A SCHOLARSHIP

Don't tell yourself that you cannot return to college next fall—YOU CAN. Right here in the Lake Union Conference others will earn their way through college by selling books. No other field can offer you the same economy of time and expense, better territory, or more help when you need help. We could advance

57 REASONS —

good, logical reasons, why you should decide to earn a scholarship this year. Look over the records

made by students in this field in past years and then observe present trends in our book and magazine sales.

Q. E. D.

Your mind's your own, and we shall not attempt to make it up for you—just look at the facts and let your own better judgment be your guide.

Review & Herald Publishing Ass'n

South Bend Indiana

MADE IN
CHICAGO